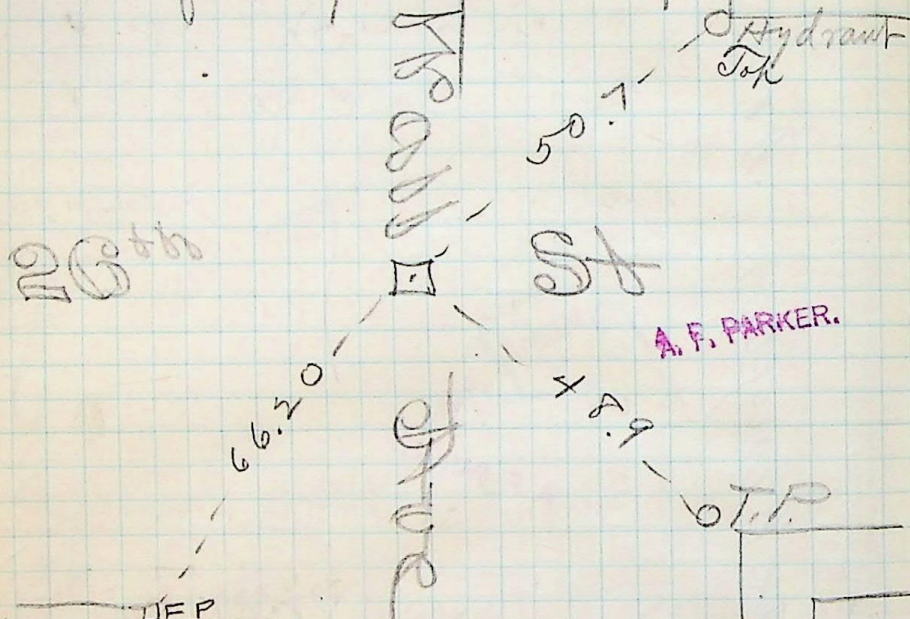
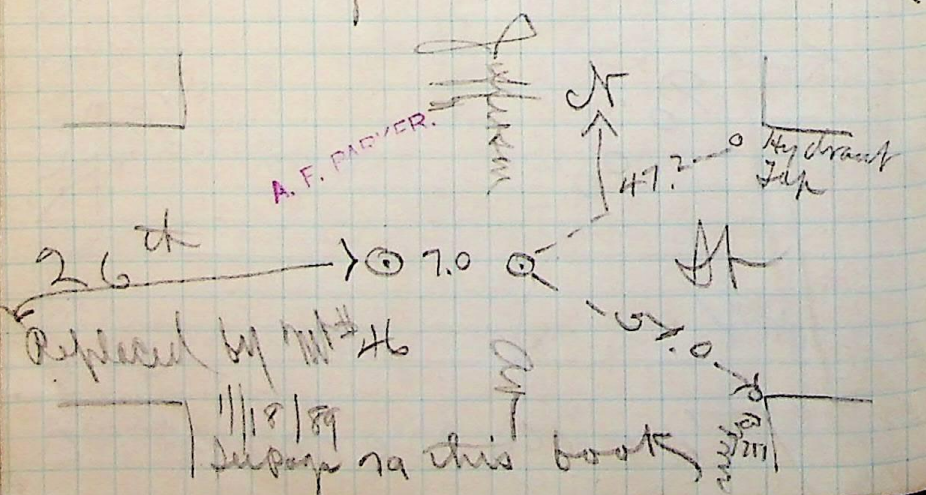


Pro 44  
 Pro facing north



Saturday Eve, Mar 16 of 1889



Replaced by Mt #46  
 11/8/89  
 Supers 29 this book

set center line 20 ft  
 & Quincy & intersected Hub  
 Quincy an P.D. on Mt #2 22<sup>th</sup>  
 then Inst on Hub @ line  
 line Quincy an  
 & set Hub<sup>s</sup> either side Center  
 P.D. on Mt #44 double centered  
 then Inst over Mt Hub

(will not do for Mt)  
 line of Jefferson an. See diagram  
 & set 2 Hubs either side of  
 shifted right up to Jefferson an  
 P.D. on Mt #3 (mark 426<sup>th</sup>)  
 Inst on Mt #44 (mark 426<sup>th</sup>)